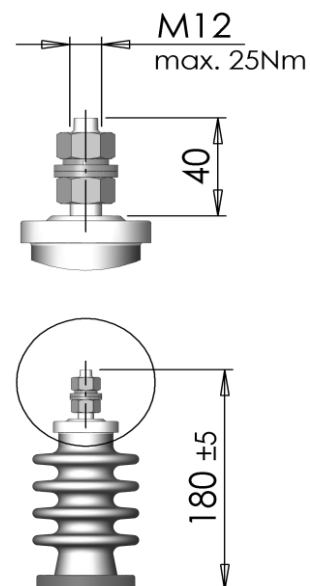
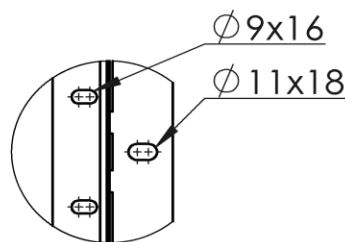
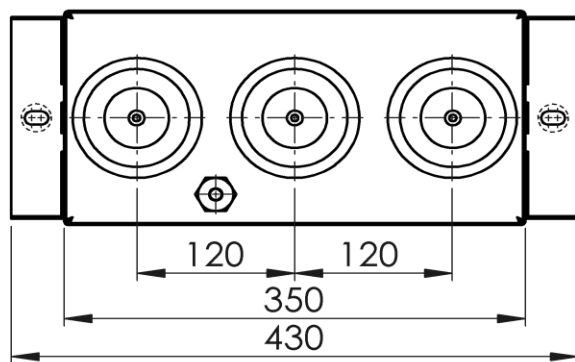


DETAIL VIEW



Total creepage [mm]	190
Air-distance [mm]	125
Dry-flashover [kV]	65
Wet-flashover [kV]	40
Drywithstand [kV]	38
Wetwithstand [kV]	28
Impulse voltage [kV]	75

U_N [kV]	7,2	DISCHARGE	75V/600s (3x9MΩ)	CONNECTION	Y
Q_N [kvar]	200	WEIGHT [kg]	32	CASE MATERIAL	Stainless steel
C_N [μF]	3x 12,28 (-5/+10%)	LIQUID CAP. [kg]	9,8	DIMENSIONS:	
f_N [Hz]	50	STANDARD	IEC 60871-1/05	A [mm]	145
I_N [A]	16,0	INT. FUSES	NO	B [mm]	450
BIL [kV]	20/60	SIDE BRACKETS	YES	C [mm]	670
TEMP. CAT.	-40/C	BOTTOM BRACKETS	YES	D [mm]	100
LIQUID	M-DBT (NON PCB)			DRAWN:	Stehlík J.
DRAWING No.:	4K0026Aa	TYPE:	CPEFS 23-7,2/200-C2	CHECKED:	Prokopec M.
				DATE:	7.4.2015



ZEZ SILKO s.r.o.
Žamberk
CZECH REPUBLIC

ZEZ SILKO s.r.o.
Pod černým lesem 683
564 01 Žamberk
Czech Republic

tel.: +420 465 673 111
fax.: +420 465 612 319
e-mail: zez@zez-silko.cz
http:// www.zez-silko.cz